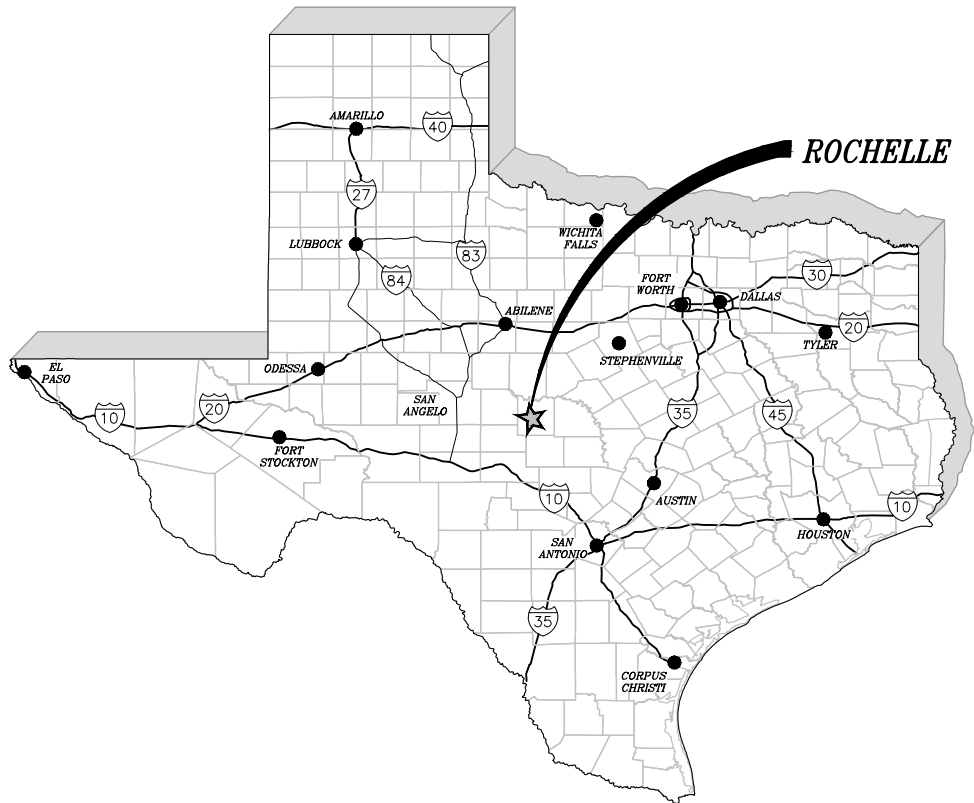


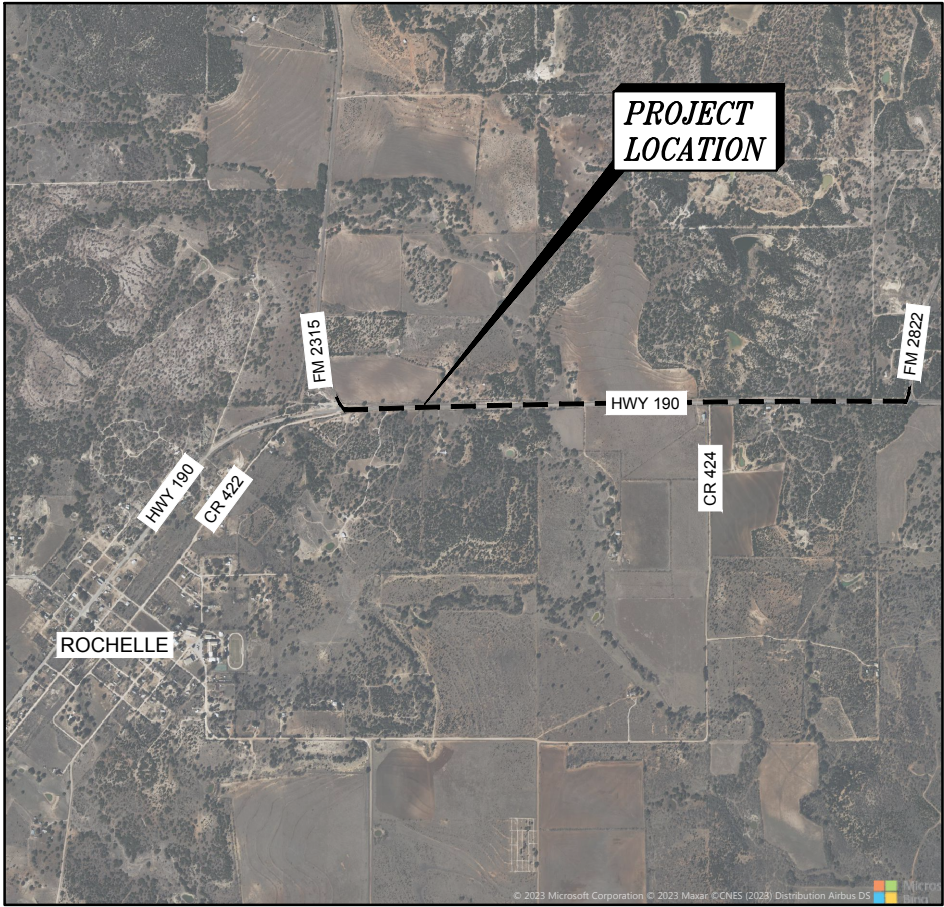
# PLANS FOR ROCHELLE WSC ON BEHALF OF McCULLOCH COUNTY WATER LINE REPLACEMENT FUNDED BY TDA CDV21-0347 OCTOBER 2023

**RECORD DRAWING**  
**MARCH, 2025**  
THE RECORD DRAWINGS ARE A COMPILATION  
OF A COPY OF THE SEALED ENGINEERING  
DRAWING FOR THIS PROJECT MODIFIED BY  
ADDENDA, CHANGE ORDERS AND INFORMATION  
FURNISHED BY THE CONTRACTOR.



## McCULLOCH COUNTY

FRANK TRULL, COUNTY JUDGE  
CAROL ANDERSON, COMMISSIONER PCT. 1  
RANDY DEANS, COMMISSIONER PCT. 2  
JASON BEHRENS, COMMISSIONER PCT. 3  
DAN BRATTON, COMMISSIONER PCT. 4



PROJECT VICINITY MAP  
NTS



3465 CURRY LANE  
ABILENE, TEXAS 79606  
325.695.1070

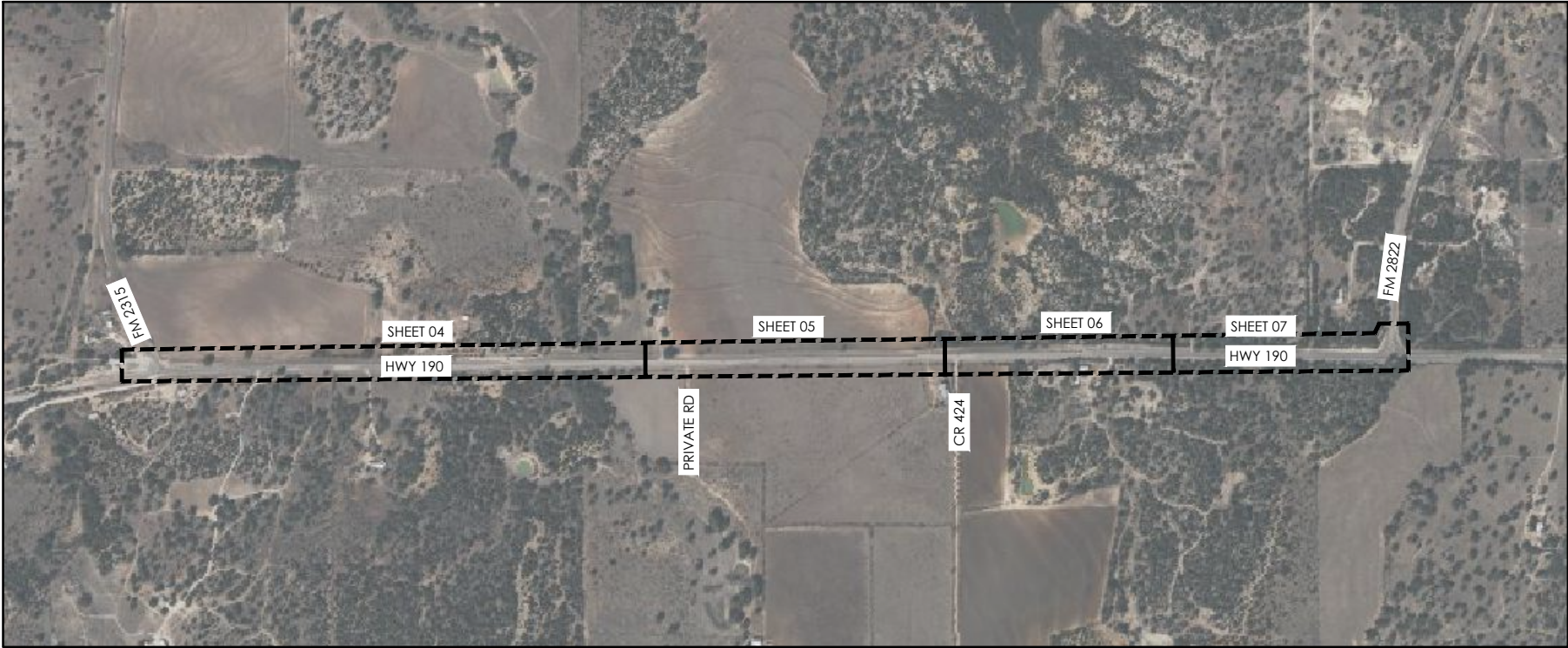
RECORD DRAWINGS  
ARE RELEASED FOR  
INFORMATIONAL PURPOSES  
ONLY UNDER THE  
AUTHORIZATION OF  
LUKE VAN DIEST, P.E.  
#136308

PROJECT LOCATION MAP  
SCALE: 1"=3,000'





X:\CO\_McCulloch\21253 - 2021-22 CDBG-TDA Infrastructure Improvements\Drafting\_Record Drawings\02 LEGEND, SHEET INDEX AND SHEET SET.dwg      Saved By: ron      Save Time: 3/4/2025 10:26 AM      Plotted by: ron miller      Plot Date: 3/4/2025 10:28 AM



## SHEET INDEX

SCALE: 1"=1,200'



| SHEET LIST TABLE |                                    |
|------------------|------------------------------------|
| Sheet Number     | Sheet Title                        |
| 01               | COVER                              |
| 02               | LEGEND, SHEET INDEX AND SHEET LIST |
| 03               | PROJECT NOTES                      |
| 04               | WATER LINE PLAN 0+00 - 13+00       |
| 05               | WATER LINE PLAN 13+00 - 26+00      |
| 06               | WATER LINE PLAN 26+00 - 38+00      |
| 07               | WATER LINE PLAN 38+00 - 51+00      |
| 08               | WATER LINE PLAN 51+00 - 64+00      |
| 09               | WATER LINE PLAN 64+00 - 77+00      |
| 10               | WATER LINE PLAN 77+00 - 88+00      |
| 11               | WATER LINE PLAN 88+00 - END        |
| 12               | WATER LINE DETAILS (1)             |
| 13               | WATER LINE DETAILS (2)             |
| 14               | WATER LINE DETAILS (3)             |
| 15               | METER REPLACEMENT MAP              |

**RECORD DRAWING**  
**MARCH 2025**  
THE RECORD DRAWINGS ARE A COMPILATION  
OF A COPY OF THE SEALED ENGINEERING  
DRAWING FOR THIS PROJECT MODIFIED BY  
ADDENDA, CHANGE ORDERS AND INFORMATION  
FURNISHED BY THE CONTRACTOR.

| LEGEND |                                     |
|--------|-------------------------------------|
|        | PROPOSED WATER LINE                 |
|        | PROPOSED REDUCER                    |
|        | PROPOSED COUPLING                   |
|        | PROPOSED GATE VALVE                 |
|        | PROPOSED TEE                        |
|        | PROPOSED WYE                        |
|        | PROPOSED CROSS                      |
|        | PROPOSED 11.25° BEND                |
|        | PROPOSED 22.50° BEND                |
|        | PROPOSED 45° BEND                   |
|        | PROPOSED 90° ELL                    |
|        | PROPOSED CAP                        |
|        | PROPOSED HYDRANT                    |
|        | PROPOSED FLUSH VALVE                |
|        | PROPOSED AIR VALVE                  |
|        | PROPOSED VALVE AND ROW MARKERS      |
|        | PROPOSED FLUSH VALVE (PROFILE VIEW) |
|        | PROPOSED AIR VALVE (PROFILE VIEW)   |
|        | PROPOSED GATE VALVE (PROFILE VIEW)  |
|        | PROPOSED BORE AND ENCASEMENT        |
|        | EXISTING CONCRETE PAVEMENT          |
|        | EXISTING ASPHALT PAVEMENT           |
|        | EXISTING GRAVEL                     |
|        | EXISTING GAS LINE                   |
|        | EXISTING GRAVEL                     |
|        | EXISTING FENCE                      |
|        | EXISTING BURIED PHONE LINE          |
|        | EXISTING BURIED TV CABLE            |
|        | EXISTING OVERHEAD ELECTRIC          |
|        | EXISTING UNDERGROUND ELECTRIC       |
|        | EXISTING FIBER OPTIC CABLE          |
|        | EXISTING WATER LINE                 |
|        | EXISTING SEWER LINE                 |
|        | PROPOSED UTILITY EASEMENT LINE      |
|        | EXISTING BNDY LINE                  |
|        | PROPERTY OWNER                      |
|        | EXISTING WATER METER                |
|        | EXISTING WATER VALVE                |
|        | EXISTING IRRIGATION VALVE           |
|        | EXISTING FLUSH VALVE                |
|        | EXISTING PHONE PEDESTAL             |
|        | EXISTING UTILITY POLE               |
|        | EXISTING SIGN                       |
|        | EXISTING LIGHT POLE                 |
|        | EXISTING ELECTRIC METER             |
|        | EXISTING GAS METER                  |
|        | EXISTING GAS TEST STATION           |
|        | EXISTING MAILBOX                    |
|        | EXISTING TREE                       |

RECORD DRAWINGS  
ARE RELEASED FOR  
INFORMATIONAL PURPOSES  
ONLY UNDER THE  
AUTHORIZATION OF  
LUKE VAN DIEST, P.E.  
#136308

RECORD DRAWINGS



ROCHELLE, TEXAS  
WATER LINE REPLACEMENT  
LEGEND, SHEET INDEX AND SHEET LIST

| NO.   | REVISION | DATE   |
|-------|----------|--|
| 02    |          |  |
| 15    |          |  |
| 02    |          |  |
| 21253 | NOTED    | SCALE<br>BAR IS ONE INCH IN LENGTH ON ORIGINAL DRAWING.<br>CHECK SCALE AND ADJUST ACCORDINGLY. |

TCEQ WATER DISTRIBUTION SYSTEM  
GENERAL CONSTRUCTION NOTES

- This water distribution system must be constructed in accordance with the current Texas Commission on Environmental Quality (TCEQ) Rules and Regulations for Public Water Systems 30 Texas Administrative Code (TAC) Chapter 290 Subchapter D. When Conflicts are noted with local standards, the more stringent requirement shall be applied. At a minimum, construction for public water systems must always meet TCEQ's "Rules and Regulations for Public Water Systems."
- All newly installed pipes and related products must conform to American National Standards Institute (ANSI)/NSF International Standard 61 and must be certified by an organization accredited by ANSI [§290.44(a)(1)].
- Plastic pipe for use in public water systems must bear the NSF International Seal of Approval (NSF-pw) and have an ASTM design pressure rating of at least 150 psi or a standard dimension ratio of 26 or less [§290.44(a)(2)].
- No pipe which has been used for any purpose other than the conveyance of drinking water shall be accepted or relocated for use in any public drinking water supply [§290.44(a)(3)].
- All water line crossings of wastewater mains shall be perpendicular [§290.44(e)(4)(B)].
- Water transmission and distribution lines shall be installed in accordance with the manufacturer's instructions. However, the top of the waterline must be located below the frost line and in no case shall the top of the water line be less than 24 inches below ground surface [§290.44(a)(4)].
- The maximum allowable lead content of pipes, pipe fittings, plumbing fittings, and fixtures is 0.25 percent [§290.44(b)].
- The contractor shall install appropriate air release devices with vent openings to the atmosphere covered with 16-mesh or finer, corrosion resistant screening material or an acceptable equivalent [§290.44(d)(1)].
- The contractor shall not place the pipe in water or where it can be flooded with water or sewage during its storage or installation [§290.44(f)(1)].
- When waterlines are laid under any flowing or intermittent stream or semi-permanent body of water the waterline shall be installed in a separate watertight pipe encasement. Valves must be provided on each side of the crossing with facilities to allow the underwater portion of the system to be isolated and tested

[§290.44(f)(2)].

- Pursuant to 30 TAC §290.44(a)(5), the hydrostatic leakage rate shall not exceed the amount allowed or recommended by the most current AWWA formulas for PVC pipe, cast iron and ductile iron pipe. Include the formulas in the notes on the plans.

o The hydrostatic leakage rate for polyvinyl chloride (PVC) pipe and appurtenances shall not exceed the amount allowed or recommended by formulas in America Water Works Association (AWWA) C-605 as required in 30 TAC §290.44(a)(5). Please ensure that the formula for this calculation is correct and most current formula is in use;

$$Q = \frac{LD^3P}{148,000}$$

Where:

- Q = the quantity of makeup water in gallons per hour,
- L = the length of the pipe section being tested, in feet,
- D = the nominal diameter of the pipe in inches, and
- P = the average test pressure during the hydrostatic test in pounds per square inch (psi)

o The hydrostatic leakage rate for ductile iron (DI) pipe and appurtenances shall not exceed the amount allowed or recommended by formulas in America Water Works Association (AWWA) C-600 as required in 30 TAC §290.44(a)(5). Please ensure that the formula for this calculation is correct and most current formula is in use;

$$L = \frac{SD^3P}{148,000}$$

Where:

- L = the quantity of makeup water in gallons per hour,
- S = the length of the pipe section being tested, in feet,
- D = the nominal diameter of the pipe in inches, and
- P = the average test pressure during the hydrostatic test in pounds per square inch (psi)

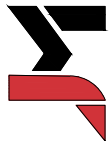
- The contractor shall maintain a minimum separation distance in all directions of nine feet between the proposed waterline and wastewater collection facilities including manholes. If this distance cannot be maintained, the contractor must immediately notify the project engineer for further direction. Separation distances, installation methods, and materials utilized must meet §290.44(e)(1)-(4).

**RECORD DRAWING**  
**MARCH, 2025**  
THE RECORD DRAWINGS ARE A COMPILATION OF A COPY OF THE SEALED ENGINEERING DRAWING FOR THIS PROJECT MODIFIED BY ADDENDA, CHANGE ORDERS AND INFORMATION FURNISHED BY THE CONTRACTOR.

RECORD DRAWINGS ARE RELEASED FOR INFORMATIONAL PURPOSES ONLY UNDER THE AUTHORIZATION OF LUKE VAN DIEST, P.E. #136308

RECORD DRAWINGS

**JACOB MARTIN**



TBPE FIRM #1019493

TBPE FIRM #2448

ROCHELLE, TEXAS

WATER LINE REPLACEMENT

PROJECT NOTES

| NO. REVISION |  | DATE  |  | PROJECT # |      | SCALE |  | BARS ONE INCH IN LENGTH ON ORIGINAL DRAWING |  | CHECK SCALE AND ADJUST ACCORDINGLY. |  |
|--------------|--|-------|--|-----------|------|-------|--|---|--|-------------------------------------|--|
| 03           |  |       |  | 21253     | NONE |       |  |   |  |                                     |  |
| SEQ.         |  | SHEET |  |           |      |       |  |   |  |                                     |  |
| 03           |  | 15    |  | 03        |      |       |  |   |  |                                     |  |

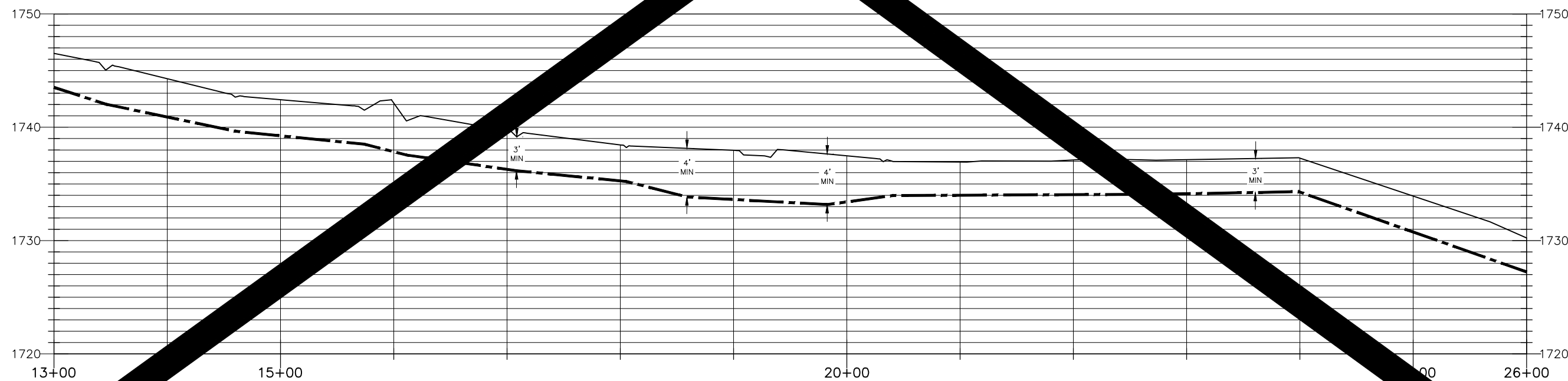
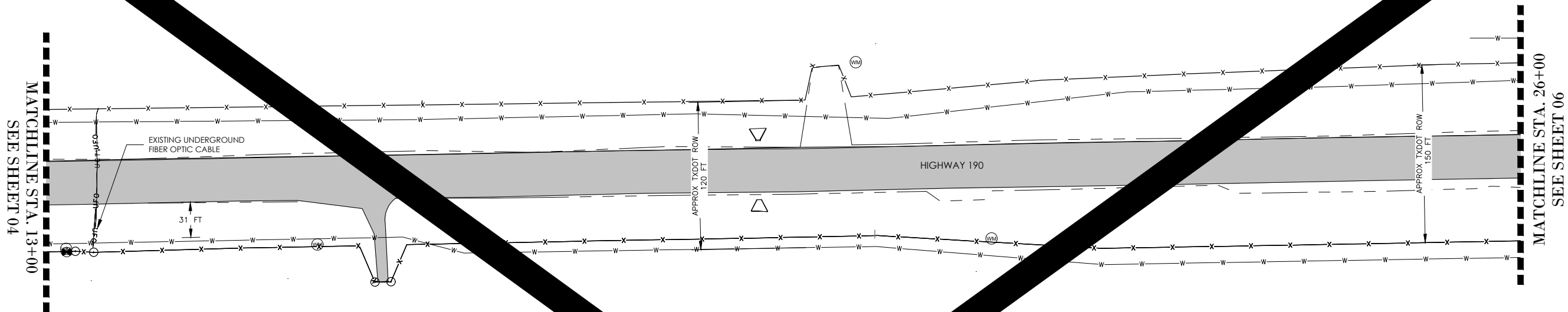




RECORD DRAWINGS  
ARE RELEASED FOR  
INFORMATIONAL PURPOSES  
ONLY UNDER THE  
AUTHORIZATION OF  
LUKE VAN DIEST, P.E.  
#136308

**JACOB**

WATER LINE PLAN 13+00 - 26+00

[illegible]

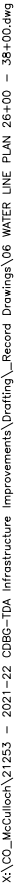
Plot Date: 3/4/2025 10:28 AM

Plotted by: ron miller

Save Time: 3/4/2025 10:24 AM

Saved By: ron

X:\CO\_McCulloch\21253 - 2021-22 CDBG-TDA Infrastructure Improvements\Drafting\\_Record Drawings\05 WATER LINE PLAN 13+00 - 26+00.dwg



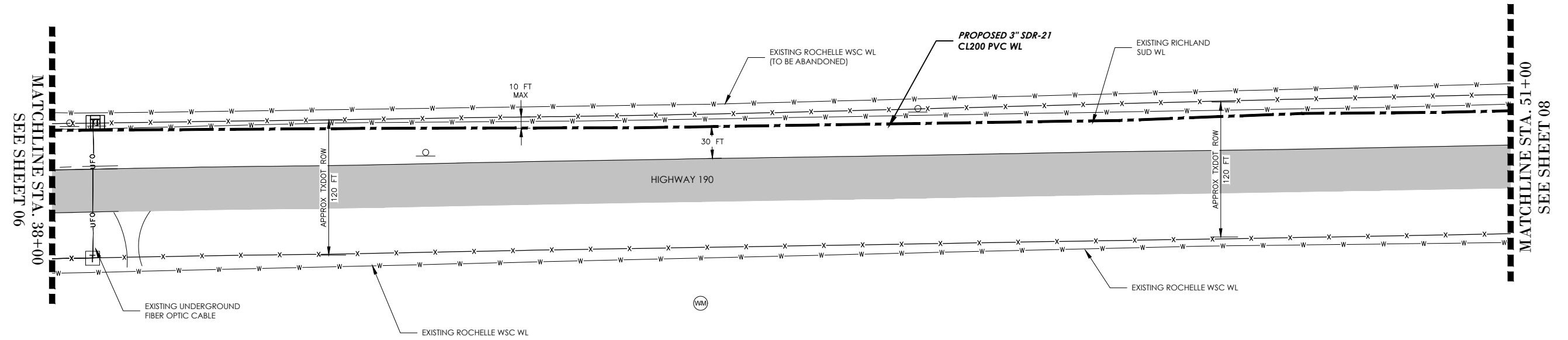
RECORD DRAWINGS  
ARE RELEASED FOR  
INFORMATIONAL PURPOSES  
ONLY UNDER THE  
AUTHORIZATION OF  
LUKE VAN DIEST, P.E.  
#136308



**JACOB**  
**MARTIN**

TBPE FIRM | TBAE FIRM | TBPES FIRM

|          |      |          |   |                        |
|----------|------|----------|---|------------------------|
| 06<br>15 | SEQ. |          | SHEET   |                        |
|          | NO.  | REVISION | PROJECT #   | SCALE                  |
|          |      |          | 21253   | $\frac{1}{8}'' = 100'$ |
|          |      |          |   |                        |
|          |      |          |   |                        |
|          |      |          |   |                        |
|          |      |          | BAR IS ONE INCH IN LENGTH ON ORIGINAL DRAWING.<br><small>© 1997 THE McGRAW-HILL COMPANIES, INC. ALL RIGHTS RESERVED. REPRODUCTION OR TRANSMISSION OF THIS DOCUMENT WITHOUT PERMISSION OF THE PUBLISHER IS PROHIBITED.</small> |                        |



**RECORD DRAWING**  
**MARCH, 2025**  
THE RECORD DRAWINGS ARE A COMPILATION  
OF A COPY OF THE SEALED ENGINEERING  
DRAWING FOR THIS PROJECT MODIFIED BY  
ADDENDA, CHANGE ORDERS AND INFORMATION  
FURNISHED BY THE CONTRACTOR.

RECORD DRAWINGS  
ARE RELEASED FOR  
FORMATIONAL PURPOSES  
ONLY UNDER THE  
AUTHORIZATION OF  
LUKE VAN DIEST, P.E.  
#136308

## RECORD DRAWINGS



JACOB  
MARTIN

TBAE FIRM  
# BR 2261

TBPE FIRM  
# 2448

TBPEL FIRM  
# 10194493

ROCHELLE, TEXAS  
WATER LINE REPLACEMENT

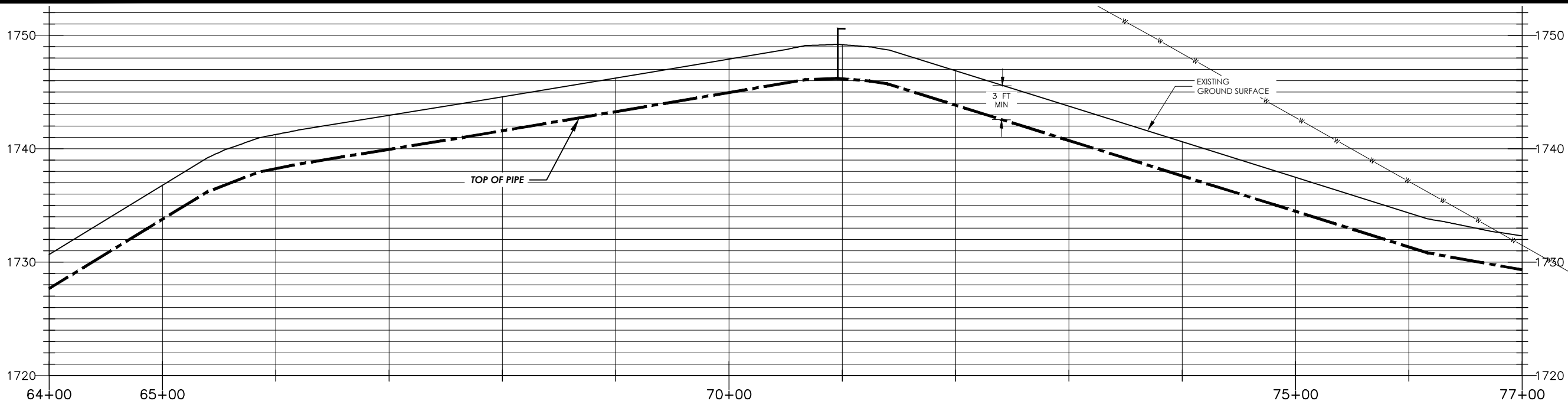
WATER LINE PLAN 38+00 - 51+00

|         |  |                    |                    |   |  |
|---------|--|--------------------|--------------------|---|--|
| NO.     |  | REVISION           |                    | DATE  |  |
|         |  |                    |                    |   |  |
|         |  |                    |                    |   |  |
|         |  |                    |                    |   |  |
|         |  |                    |                    |   |  |
|         |  |                    |                    |   |  |
|         |  |                    |                    |   |  |
|         |  |                    |                    |   |  |
| SEQ.    |  | SHEET              |                    |   |  |
| 07 / 15 |  | 07                 |                    |   |  |
|         |  | PROJECT #<br>21253 | SCALE<br>1" = 100' | BARS ONE INCH IN LENGTH ON ORIGINAL DRAWING.<br>CHECK SCALE AND ADJUST ACCORDINGLY. |  |

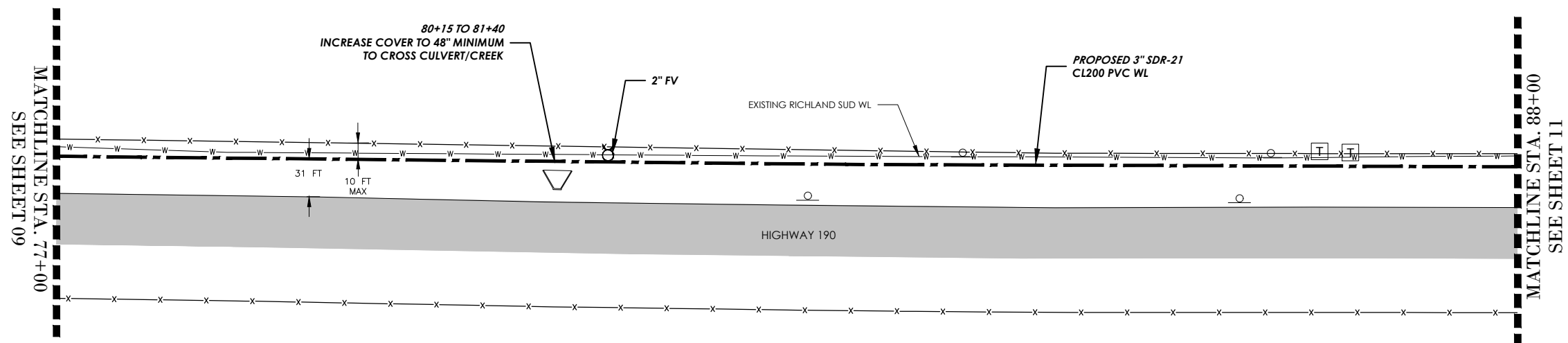




x:\CO\_McCulloch\21253 - 2021-22 CDBG-TDA Infrastructure Improvements\Drafting\\_Record Drawings\09 WATER LINE PLAN 64+00 - 77+00.dwg



|      |       |           |           |   |
|------|-------|-----------|-----------|---|
| REQ. | SHEET | PROJECT # | SCALE     | BAR IS ONE INCH IN LENGTH ON ORIGINAL DRAWING.<br>CHECK SCALE AND ADJUST ACCORDINGLY. |
| 09   | 15    | 21253     | 1" = 100' |   |
|      | 09    |           |           |   |



RECORD DRAWINGS  
ARE RELEASED FOR  
INFORMATIONAL PURPOSES  
ONLY UNDER THE  
AUTHORIZATION OF  
LUKE VAN DIEST, P.E.  
#136308

## RECORD DRAWINGS



**JACOB**  
**MARTIN**

TBPE FIRM | TBAE FIRM | TBPELS FIRM

ROCHELLE, TEXAS  
WATER LINE REPLACEMENT

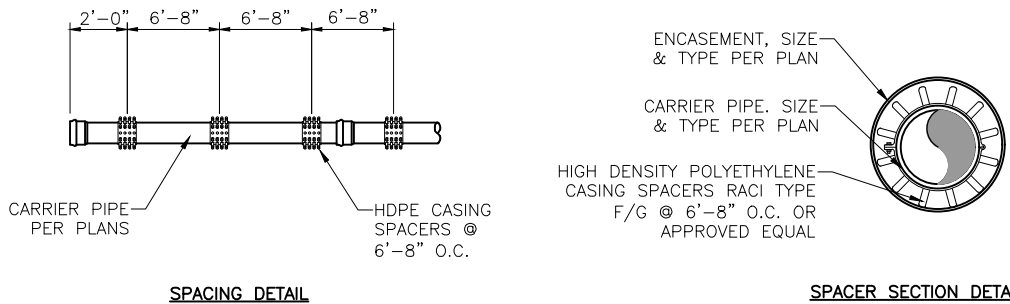
WATER LINE PLAN 78+00 - 89+00

|           |    |           |  |      |
|-----------|----|-----------|--|------|
| NO.       |    | REVISION  |  | DATE |
| SEQ.      |    | SHEET     |  |      |
| 10        | 15 | 10        |  |      |
| PROJECT # |    | SCALE     | BARS ONE INCH IN LENGTH ON ORIGINAL DRAWING. |      |
| 21253     |    | 1" = 100' |  |      |





X:\CO\_McCulloch\21253 - 2021-22 CDBG-TDA Infrastructure Improvements\Drafting\_Record Drawings\12 WATER LINE DETAILS (1).dwg Saved By: ron Save Time: 3/4/2025 10:19 AM Plotted By: ron miller Plot Date: 3/4/2025 10:29 AM

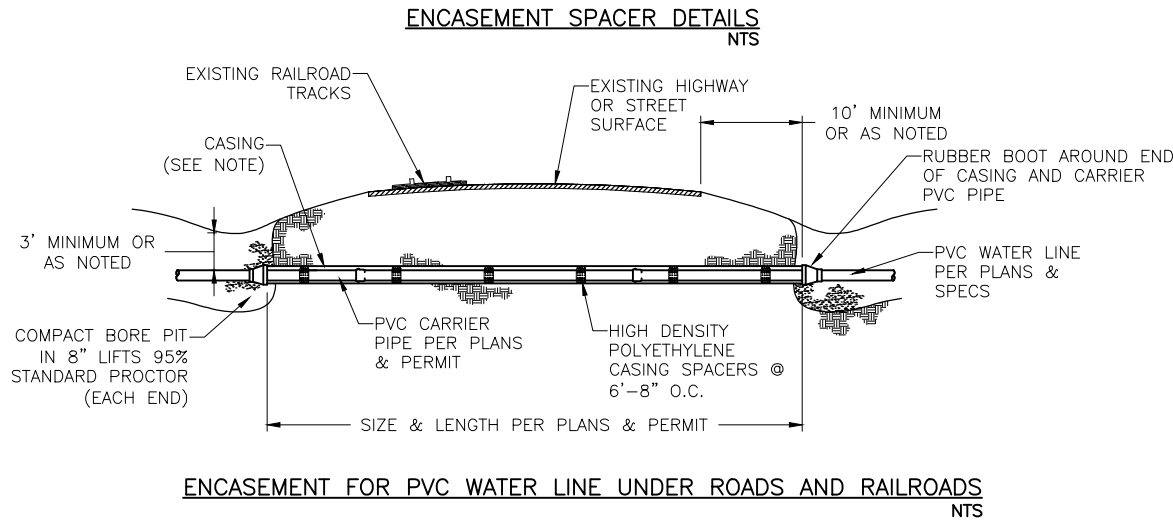


- BORE & ENCASEMENT NOTES:
1. ALL OPEN CUT AND ENCASEMENT SHALL INCLUDE CASING SPACERS FOR THE CARRIER PIPE.
  2. ALL CASING SHALL BE 3/8" STEEL UNLESS OTHERWISE SPECIFIED.
  3. CASING FOR RAILROAD CROSSINGS SHALL BE 5/16" STEEL.
  4. BORE & ENCASEMENT LENGTH SPECIFIED ON THE PLANS SHALL NOT BE INCREASED WITHOUT PRIOR PERMISSION FROM ENGINEER.

**RECORD DRAWING**  
**MARCH, 2025**  
THE RECORD DRAWINGS ARE A COMPILATION OF A COPY OF THE SEALED ENGINEERING DRAWING FOR THIS PROJECT MODIFIED BY ADDENDA, CHANGE ORDERS AND INFORMATION FURNISHED BY THE CONTRACTOR.

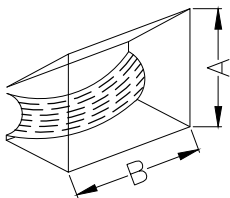
RECORD DRAWINGS ARE RELEASED FOR INFORMATIONAL PURPOSES ONLY UNDER THE AUTHORIZATION OF LUKE VAN DIEST, P.E. #136308

RECORD DRAWINGS



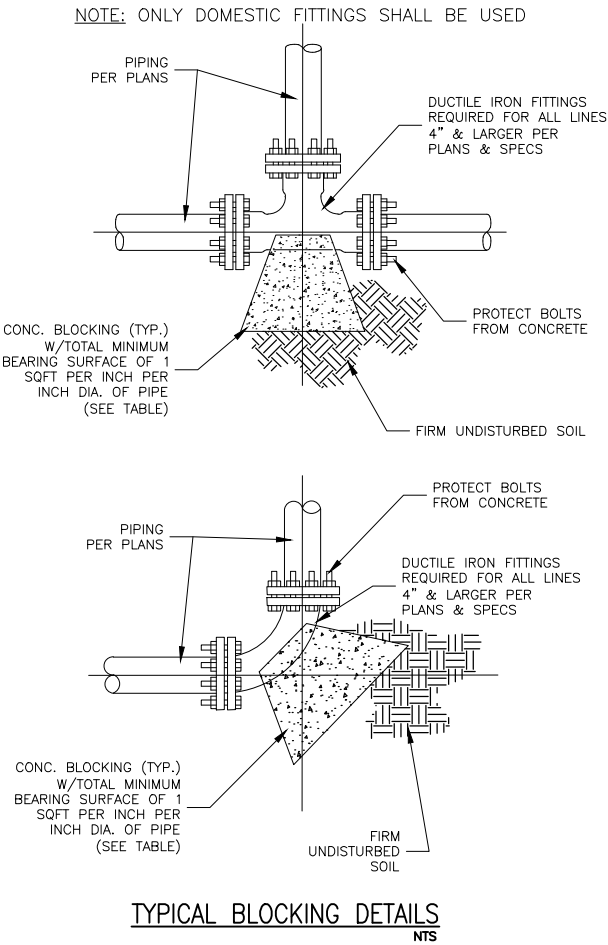
| DIMENSIONS FOR CONCRETE THRUST BLOCKS |  |  |   |
|---------------------------------------|--|--|---|
| Pipe Dia. Size (inches)               | Minimum Soil Bearing Area Required (Square Feet) | Typical Dimensions Of Bearing Area In Inches (A x B) | Typical Volume Of Conc. Required (Cubic Feet) * |
| 2                                     | 2.0  | 12" x 24"  | 3.0   |
| 2 1/2                                 | 2.5  | 12" x 30"  | 4.0   |
| 3                                     | 3.0  | 14" x 30"  | 4.5   |
| 4                                     | 4.0  | 18" x 32"  | 6.0   |
| 6                                     | 6.0  | 24" x 36"  | 9.0   |
| 8                                     | 8.0  | 29" x 40"  | 12.0  |
| 10                                    | 10.0   | 30" x 48"  | 15.0  |
| 12 & 14                               | 12.0   | 36" x 48"  | 18.0  |

\* VARIES CONSIDERABLY W/DISTANCE BETWEEN PIPE AND BEARING POINT

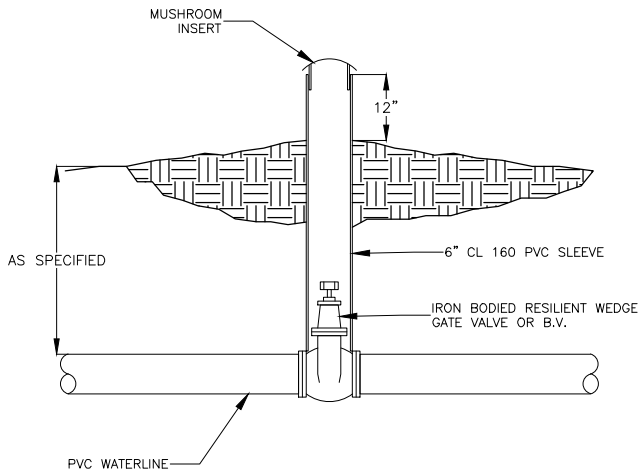


TYPICAL BLOCKING DIMENSIONS  
NTS

- NOTES:
1. BLOCKING REQ'D. ON ALL BENDS 2" & LARGER.
  2. ALL REQ'D. BENDS & FITTINGS ARE NOT LABELED ON THE PLANS.
  3. PIPE MAY BE CURVED UP TO 75% OF MFG. RECOMMENDED MAX. CURVATURE WITHOUT A BEND AS APPROVED BY OWNER & ENGINEER.
  4. ALL IRON FITTINGS & VALVES SHALL BE ENCAPSULATED IN 8 MIL POLYETHYLENE PER SPECS.
  5. CONTRACTOR SHALL USE MEGA LUG RESTRAINTS FOR ALL FITTINGS.



- NOTE:
- PROVIDE VALVE OPERATOR EXTENSIONS FOR ALL VALVES DEEPER THAN 4'.



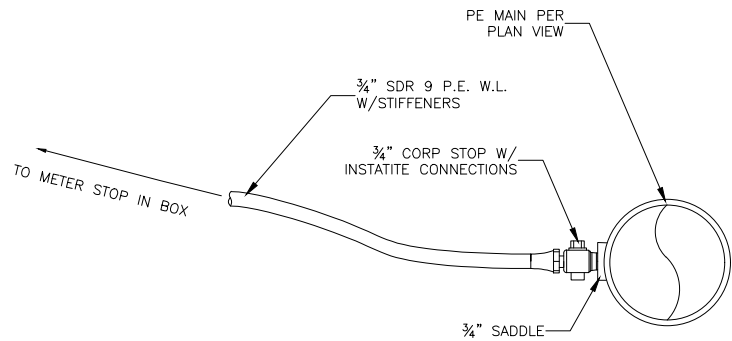
GATE VALVE & BOX (TYP.)  
NTS

ROCHELLE, TEXAS  
WATER LINE REPLACEMENT

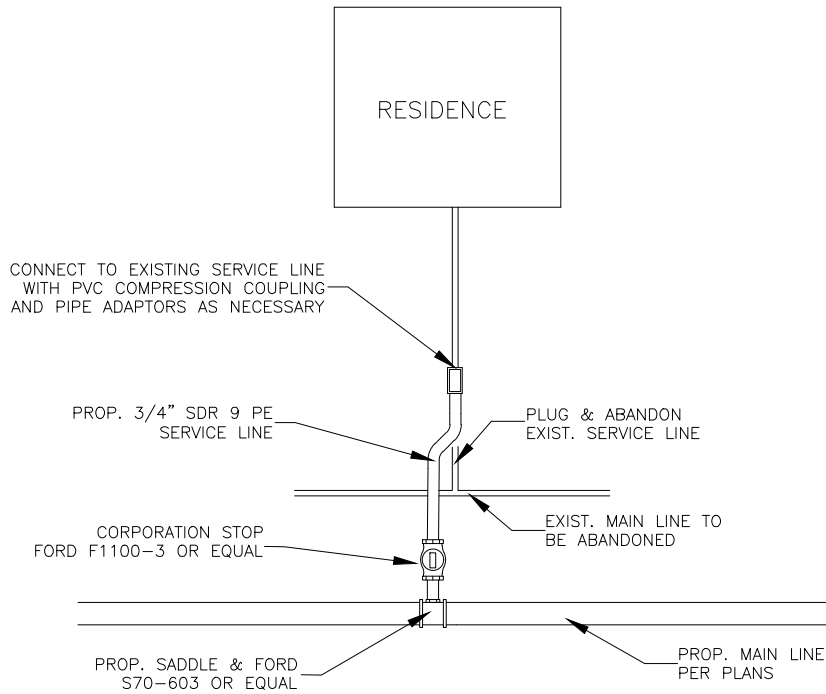
WATER LINE DETAILS (1)

| NO. | REVISION | DATE | PROJECT # | SCALE | CHECK SCALE AND ADJUST ACCORDINGLY. |
|-----|----------|------|-----------|-------|-------------------------------------|
| 12  |          |      | 21253     | NONE  |                                     |
| 15  |          |      |           |       |                                     |

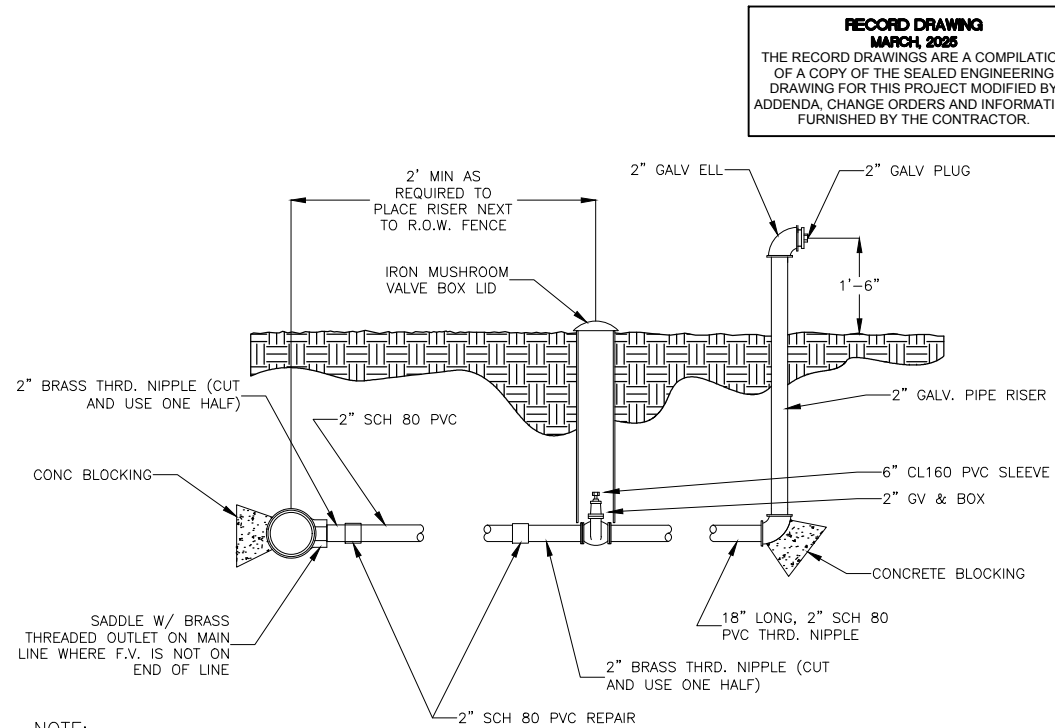
X:\CO\_McCulloch\21253 - 2021-22 CDBG-TDA Infrastructure Improvements\Drafting\_Record Drawings\13 WATER LINE DETAILS (2).dwg  
Save Time: 3/4/2025 10:19 AM  
Plotted By: ron miller  
Plot Date: 3/4/2025 10:29 AM



SERVICE CONNECTION FROM MAIN WL



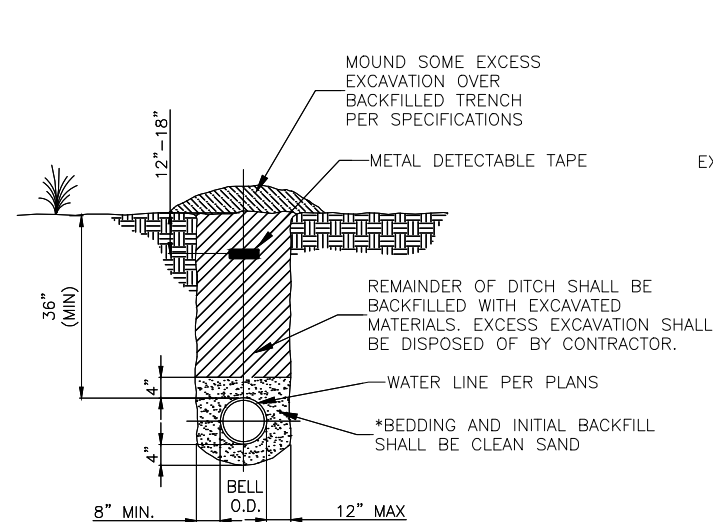
TYPICAL DETAIL FOR SERVICE RECONNECTION



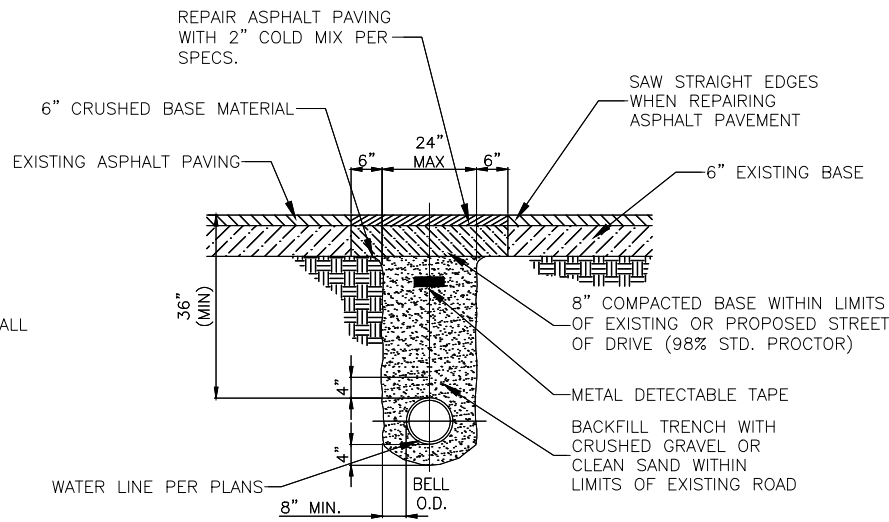
NOTE:

ADD 2"x2-1/2" BRASS FIRE FILL ADAPTER WHERE SHOWN

2" FLUSH VALVE (TYP.)  
NTS



TYPICAL TRENCH



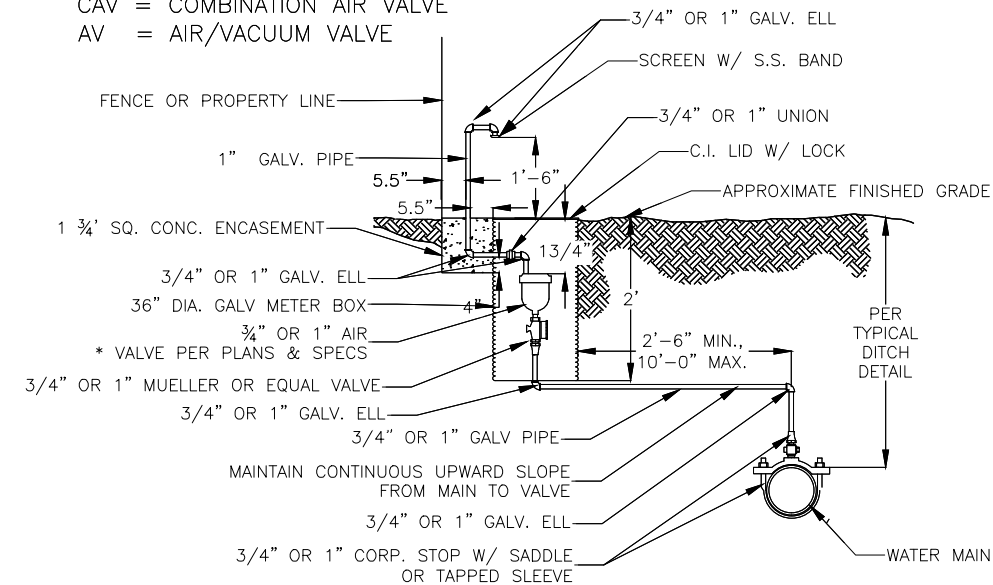
TRENCH @ EXISTING GRAVEL OR ASPHALT AREAS

NOTE:

1. SIZE AND TYPE OF AIR VALVES ARE SHOWN ON THE PLANS.

2. CONTRACTOR MAY USE DR11 HDPE PIPE IN PLACE OF GALVANIZED PIPE.

CAV = COMBINATION AIR VALVE  
AV = AIR/VACUUM VALVE



AIR VALVE DETAIL  
NTS

TYPICAL WATER LINE TRENCH SECTIONS  
N.T.S.

RECORD DRAWINGS  
ARE RELEASED FOR  
INFORMATIONAL PURPOSES  
ONLY UNDER THE  
AUTHORIZATION OF  
LUKE VAN DIEST, P.E.  
#136308

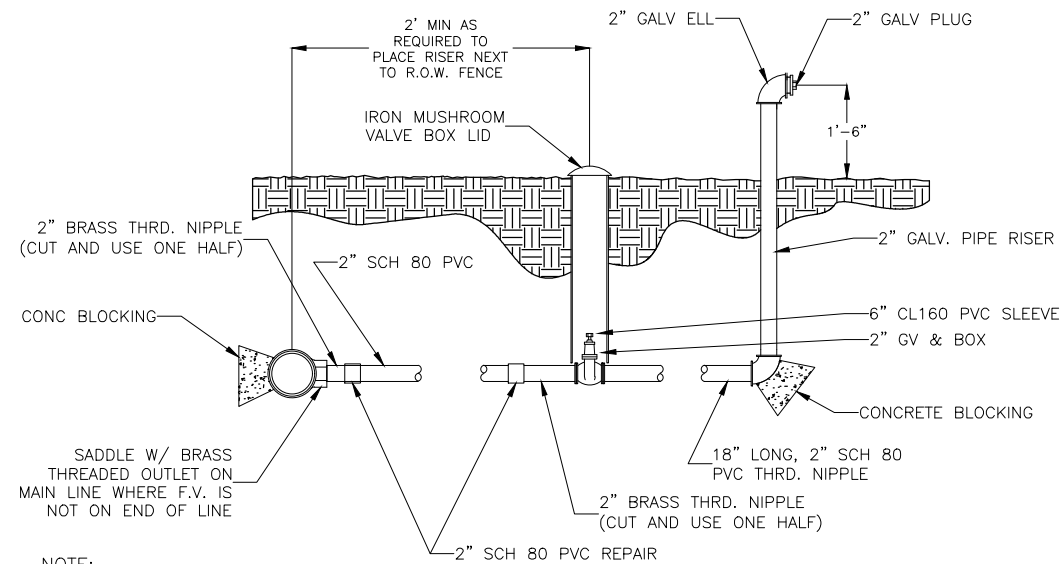
RECORD DRAWINGS

JACOB MARTIN  
TBAE FIRM # BR 2261  
TBE FIRM # 2448  
TBE FIRM # 1019493

ROCHELLE, TEXAS  
WATER LINE REPLACEMENT

WATER LINE DETAILS (2)

| NO. | REVISION | DATE | PROJECT # | SCALE | CHECK SCALE AND ADJUST ACCORDINGLY. |
|-----|----------|------|-----------|-------|-------------------------------------|
| 13  |          |      | 21253     | NONE  |                                     |
| 15  |          |      |           |       |                                     |



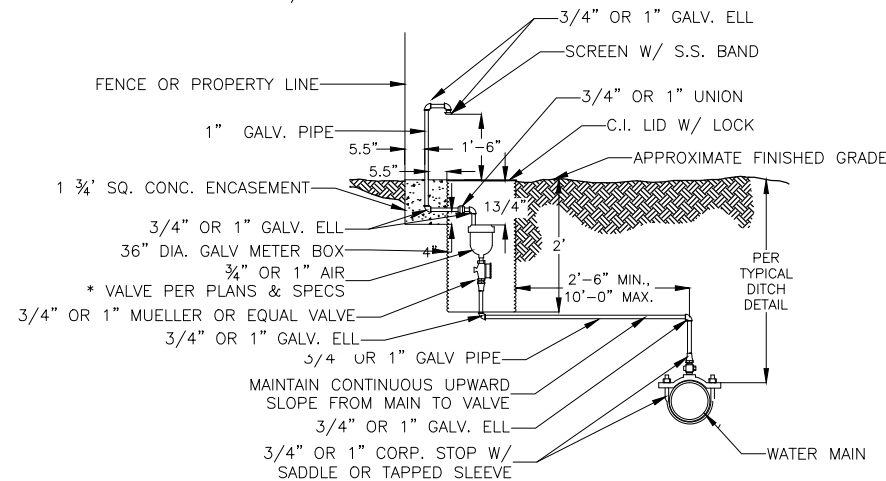
NOTE:

ADD 2"x2-1/2" BRASS FIRE  
FILL ADAPTER WHERE SHOWN

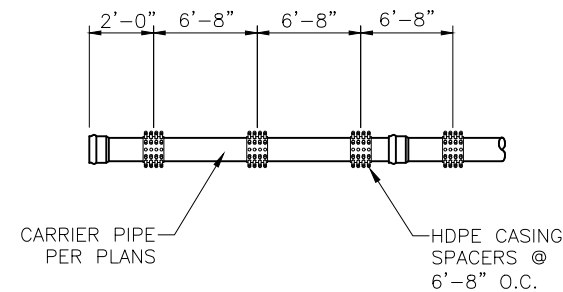
2" FLUSH VALVE (TYP.)  
NTS

1. SIZE AND TYPE OF AIR VALVES ARE SHOWN ON THE PLANS.
2. CONTRACTOR MAY USE DR11 HDPE PIPE IN PLACE OF GALVANIZED PIPE.

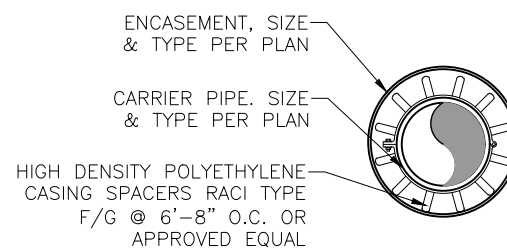
CAV = COMBINATION AIR VALVE  
AV = AIR/VACUUM VALVE



AIR VALVE DETAIL  
NTS

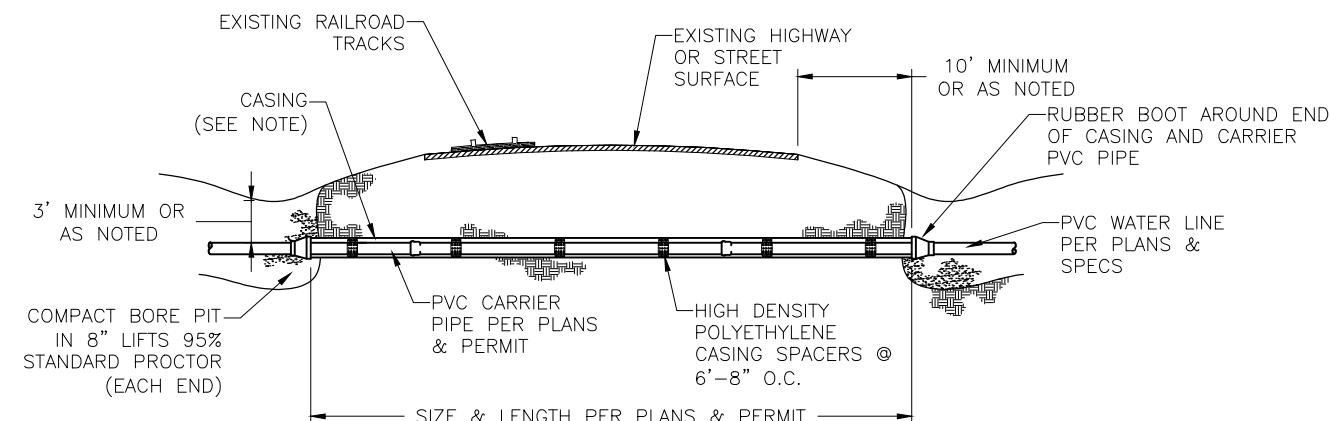


SPACING DETAIL



SPACER SECTION DETAIL

ENCASEMENT SPACER DETAILS  
NTS



ENCASEMENT FOR PVC WATER LINE UNDER ROADS AND RAILROADS  
NTS

## BORE &amp; ENCASEMENT NOTES:

1. ALL OPEN CUT AND ENCASEMENT SHALL INCLUDE CASING SPACERS FOR THE CARRIER PIPE.
2. ALL CASING SHALL BE 3/8" STEEL UNLESS OTHERWISE SPECIFIED.
3. CASING FOR RAILROAD CROSSINGS SHALL BE 5/16" STEEL.
4. BORE & ENCASEMENT LENGTH SPECIFIED ON THE PLANS SHALL NOT BE INCREASED WITHOUT PRIOR PERMISSION FROM ENGINEER.

**RECORD DRAWING**  
**MARCH, 2025**  
THE RECORD DRAWINGS ARE A COMPILATION  
OF A COPY OF THE SEALED ENGINEERING  
DRAWING FOR THIS PROJECT MODIFIED BY  
ADDENDA, CHANGE ORDERS AND INFORMATION  
FURNISHED BY THE CONTRACTOR.

RECORD DRAWINGS  
ARE RELEASED FOR  
INFORMATIONAL PURPOSES  
ONLY UNDER THE  
AUTHORIZATION OF  
LUKE VAN DIEST, P.E.  
#136308

## RECORD DRAWINGS

**JACOB**  
**MARTIN**

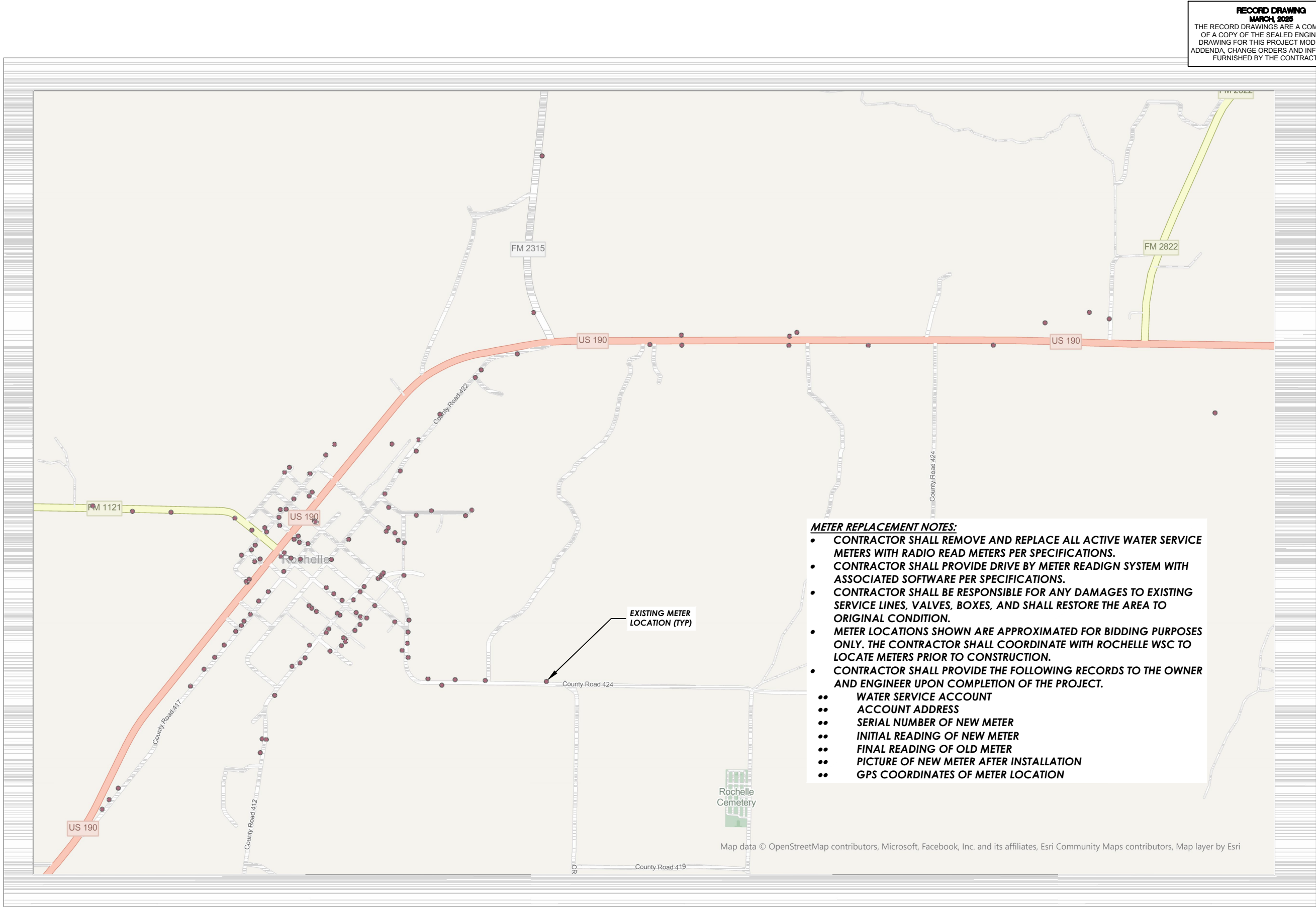
|           |        |           |           |             |            |
|-----------|--------|-----------|-----------|-------------|------------|
| IBPE FIRM | # 2448 | IBAE FIRM | # BR 2261 | IBPELS FIRM | # 10194493 |
|-----------|--------|-----------|-----------|-------------|------------|

ROCHELLE, TEXAS  
WATER LINE REPLACEMENT

### WATER LINE DETAILS (3)

|       |          |      |
|-------|----------|------|
| NO.   | REVISION | DATE |
| 14    |          |      |
| 15    |          |      |
| SEQ.  |          | DATE |
| SHEET |          | DATE |
| 14    |          | DATE |





RECORD DRAWINGS ARE RELEASED FOR INFORMATIONAL PURPOSES ONLY UNDER THE AUTHORIZATION OF LUKE VAN DIEST, P.E. #136308

RECORD DRAWINGS

JACOB MARTIN

TBAE FIRM # BR 2261

TBPE FIRM # 2448

TBPELS FIRM # 10194953

ROCHELLE, TEXAS

WATER LINE REPLACEMENT

METER REPLACEMENT MAP

| NO. | REVISION | DATE |
|-----|----------|------|
| 15  |          |      |

| SEQ. | SHEET |
|------|-------|
| 15   | 15    |

| PROJECT # | SCALE   | NOTED |
|-----------|---------|-------|
| 21253     | 1"=100' |       |

BAR IS ONE INCH IN LENGTH ON ORIGINAL DRAWING.

CHECK SCALE AND ADJUST ACCORDINGLY.